

# NEWS ON CORONAVIRUS IN BRAZIL

23.03.2020

Total cases:

1967

Cases

per million citizens:

9

## PREVENTIVE MEASURES:

(may differ from state to state)

THE PUBLIC STATE OF EMERGENCY  
IN THE COUNTRY BY THE END OF THE  
YEAR APPROVED BY THE SENATE ON  
20 MARCH

## ALLOWED:

(may differ from state to state)

✗ border closure with 8 countries  
(special rules with Uruguay)  
since 19 March for 15 days

✗ home isolation of  
suspected cases of  
coronavirus  
for 14 days

✗ public events have been  
called off or postponed

✗ schools and universities, clubs,  
shopping malls, cinemas and  
theatres in big cities closed (for 15  
days in Rio de Janeiro, 30 days in  
Sao Paulo)/ decisions up to states

✗ suspension of international flights from  
Europe (including EU) and Asia for 30  
days

normal supply of goods &  
cargo, factories & civil  
construction work normally

supermarkets, food stores,  
pharmacies, bakeries, pet  
shops, petrol stations and  
banks opened

public transport services  
and taxi operating

restaurants allowed  
to provide takeaway  
services

remote work & education  
recommended

## CORONAVIRUS VACCINE UNDER DEVELOPMENT AT THE UNIVERSITY OF SÃO PAULO

The coronavirus vaccine with VLP is  
under development by researchers  
at the University of São Paulo

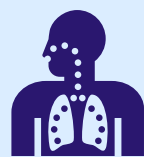
R\$  
169.6bn

## GOVERNMENT'S AID PACKAGE - 3 PILLARS

announced since 16 March 2020 and awaiting  
Congress approval

## "0" TARIFF ON IMPORTED PRODUCTS FOR MEDICAL-HOSPITAL USE

\*the tariff rate applicable for products of 33 NCM codes until September 30



BREATHING  
EQUIPMENT



GLOVES



GEL ALCOHOL



MASKS



CLINICAL  
THERMOMETERS

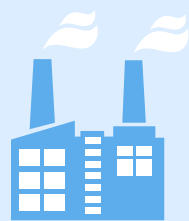


PROTECTIVE  
CLOTHING



SAFETY  
GLASSES

## The maintenance of employment



- postponement for 3 months of FGTS payments, federal taxes and 50% reduction of S System taxes by companies
- R\$5 bn FAT credit for micro and small businesses
- creation of the Anti-employment Programme: reduction of working hours and wages by up to 50%; companies must continue to pay at least the minimum wage

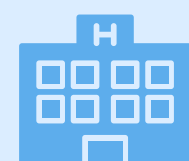
## Protecting the most vulnerable

half of the economically active population (labor force) is informal, that is, without adequate social protection in terms of income, but with access to the universal public health system



- reinforcement of the Bolsa Familia program, to include more than 1 m people (R\$ 3.1 bn)
- R\$23 bn – transfer of the 2nd installment of the 13th salary for retirees and pensioners of INSS in May 2020
- R\$21 bn – transfer of social taxes from PIS/PASEP to Service Time Guarantee Fund (FGTS) to allow new withdrawals
- R\$ 12.8 bn - advance payment of the PIS/Pasep salary bonus for June
- help for the underground economy for 3 months - R\$200 voucher announced for informal workers, the unemployed and individual microentrepreneurs (MEIs)

## Health



- allocation of the balance of the Personal Injury Caused by Land Transport Motor Vehicles fund (DPVAT) to the Unified Health System (SUS) to be applied by the federal entities, the municipalities, the states and R\$4,5 m to buy respirators, expand the hospital beds
- reduction of import tariffs for products for medical use until the end of the year, temporary exemption from IPI - tax on industrialized products for listed imported goods & raw materials that are used for domestic production
- prioritization of customs clearance of products for medical and hospital use

